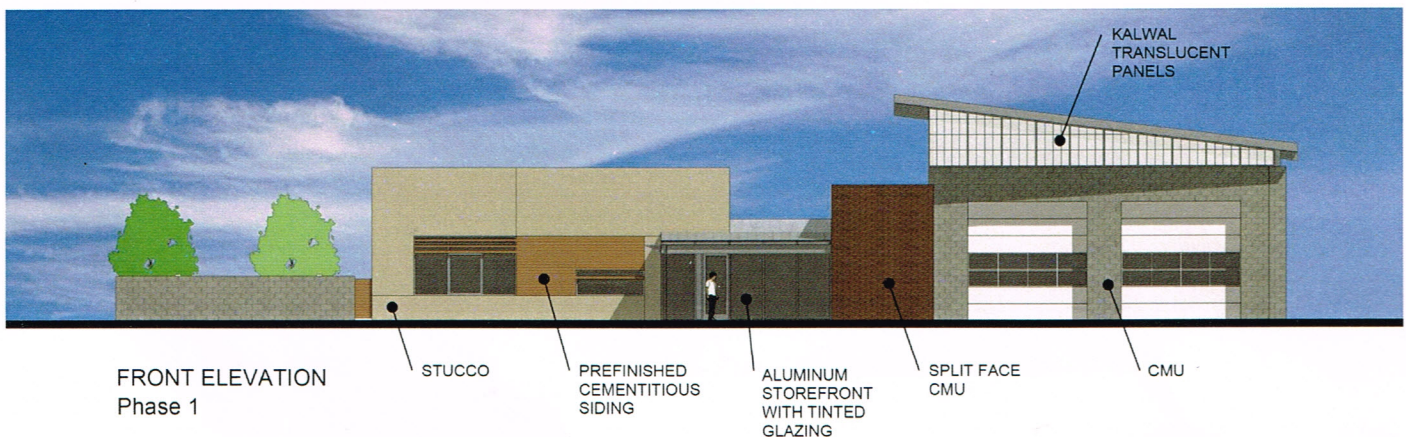




Station 19 Fact Sheet

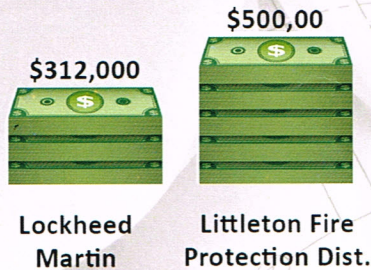
- **Need:** Addition of two new fire stations was identified as a top priority in the Master Plan* developed by Emergency Services Consulting, Inc. in 2015.
- **Partners:** Lockheed Martin, Littleton Fire Protection District, City of Littleton, Littleton Fire Rescue (LFR)
- **Cost to Build:** \$2.6 million
- **Annual Operating Cost:** \$1.5 million
- **Location:** 1.3 acre-site at the southwest corner of TrailMark Parkway and Wadsworth on land dedicated for a fire station
- **Size:** 7,850 square feet, two apparatus bays, five bunk rooms
- **Estimated completion:** Fall 2016
- **Staffing:** One advanced life support engine with three personnel, 24 hours-per-day, seven days-per-week
- **Additional services:** Littleton Police office space and a bay for public works
- **Why now?** This unique opportunity in the southwest part of the LFR service area will improve emergency response time to the community now served by Stations 13 and 16. Thirty percent of those calls could have a faster response time with the new station.



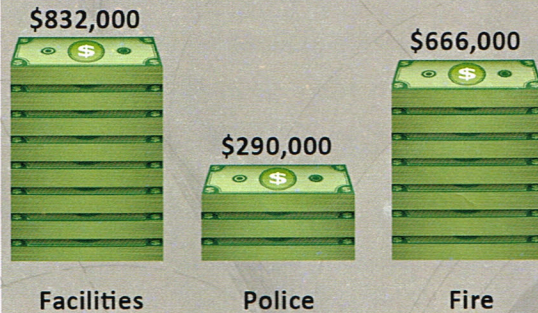
*www.littletongov.org/firedocs
See priority 8 on page 117.

STATION 19 CAPITAL FUNDING

Total = \$2,600,000



Impact Fees-\$1,788,00



What are impact fees?

Impact fees are paid by residential and commercial development to municipalities for new facilities needed to address demand created by new development.

Impact Fee Fund

\$895,000 = existing in fund

\$893,000 = 3 year loan from capital projects fund

TOTAL = \$1,788,000

Station 19 Annual Operating Costs

City of Littleton	\$800,000
Littleton Fire Protection District	\$400,000
Lockheed Martin	\$300,000

TOTAL: \$1,500,000