

SAFETY

Crossing TrailMark Parkway

5/08/2014 HOA meeting

Jim Russell

Responsible Progress

Outline

- Issue
- City of Littleton / Colorado facts
- Near-Term
 - Existing 3 crosswalks with images
 - Short-term issue resolution
- Long-term Options
 - New Crosswalk
 - Upgrade crosswalk
- What Next?

Safety: Crosswalk Issues

- Issue
 - Vehicles not stopping for pedestrians crossing TrailMark Parkway
- Why?
 - Improperly maintained crosswalk or signage?
 - Poor Visibility?
 - Pedestrian (walker) not in a crosswalk?
 - Vehicle operator (driver) ignorance of signs and law for pedestrian right of way?



Resident comment...
In Crosswalk and part way
across street, vehicle did
not stop!

Crosswalk “Rules” / Info

(from April 2014 call with City of Littleton Director of Public Works)

- Rules of the Crosswalk
 - Vehicle has right of way with Pedestrian on curb
 - Pedestrian has right of way in Crosswalk
 - Pedestrian does not have right to enter Crosswalk and create unsafe condition (ie Walk in front of vehicle)
- Unclear what a “safe distance is from oncoming vehicle”
- At end of day, stay safe, stay on curb until vehicles not present or stopped.

Crosswalks

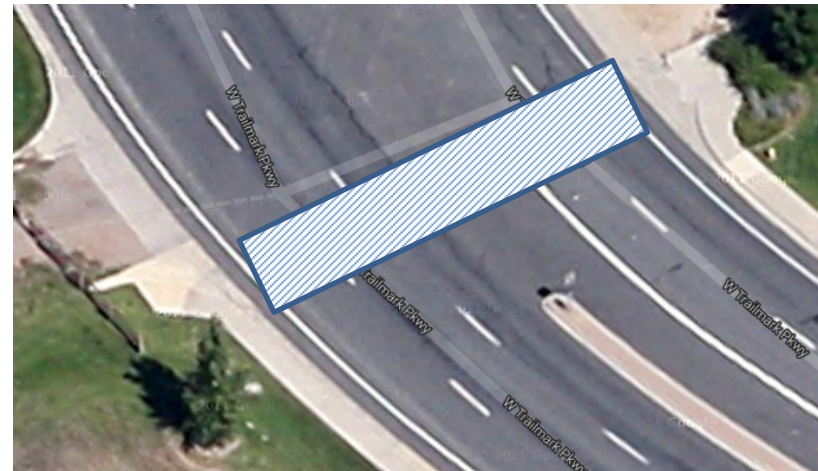


Crosswalk: Near Entrance



Aerial View:

Old Google image without crosswalk



- Location
 - See image
- Construction
 - Signage – any extra to address road curve?
 - Visibility:
 - Trim lower part of trees in median (HOA) ???
- Cost
 - In City of Littleton working budget or need dedicated line item 2015?
- Schedule
 - HOA – trim tree?

Vehicle View – Heading South



Near Entrance: Ped and Vehicle Views

Pedestrian View – Heading East



Vehicle View – Heading North



Pedestrian View – Heading West



Vehicle View – Heading South



Visibility Concern: Trees & Curve

Crosswalk: S Everett Pkwy

- Location
 - See image
- Construction
 - Visibility: Road curves
 - Signage – extra sign for road curve heading east?
- Cost
 - In City of Littleton working budget or need dedicated line item 2015?
- Schedule
 - City of Littleton lead time??

Aerial View



Everett: Ped and Vehicle Views

Pedestrian View – Heading North

Get Photograph

Vehicle View – Heading West



Pedestrian View – Heading South



Vehicle View – Heading East

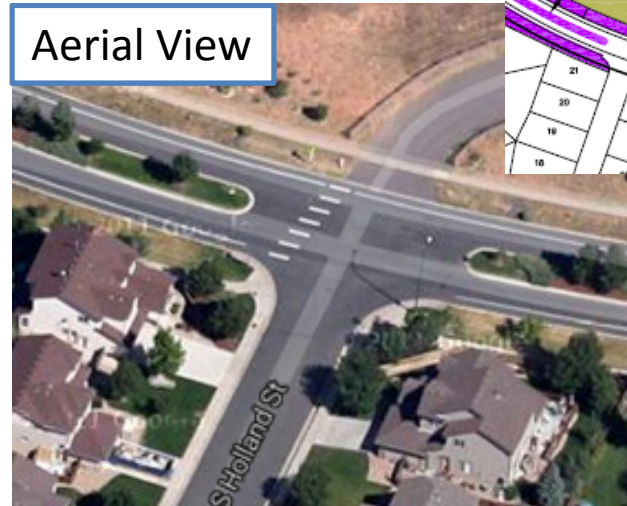


Visibility Concern: Road Curve
and No Sign

Crosswalk: Holland St.

- Location
 - See image
- Construction
 - Signage – any extra?
 - Visibility: Trim lower part of trees in 2 medians (HOA owns median mtn: 2L and 2K)
See backup slide with pic of trimmed trees
- Cost
 - In COL working budget or need dedicated line item 2015?
- Schedule: HOA – trim tree?

Aerial View



Vehicle View – Heading East



Visibility Concern : Trees
from East and West

Holland: Ped and Vehicle Views

Pedestrian View – Heading North



Vehicle View – Heading West



Visibility Concern

Pedestrian View – Heading South



Vehicle View – Heading East



Visibility Concern

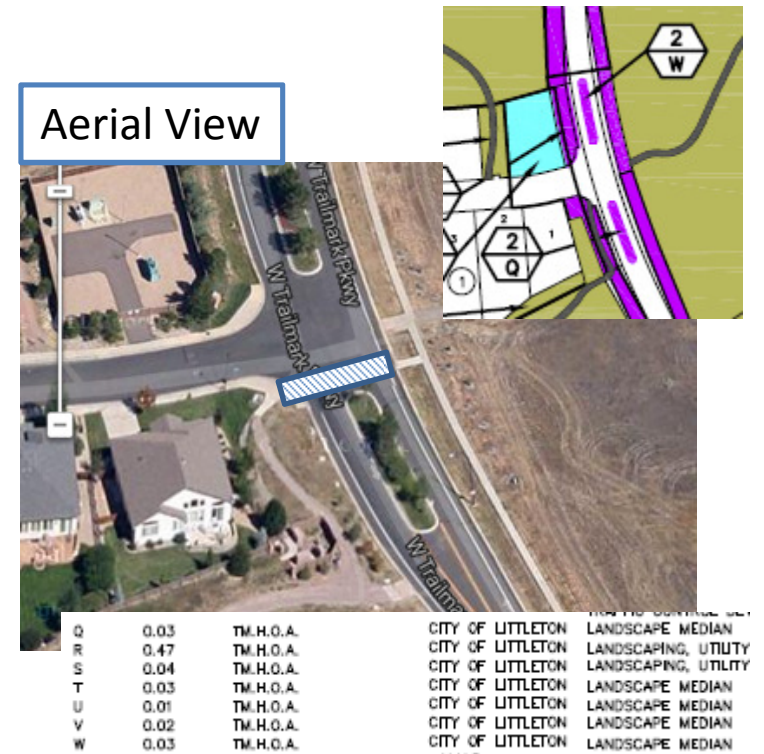
Long-Term Crosswalks

- New Crosswalk at Danzig Place
 - See next slides
 - Any other locations: Flower Ct?, Dover ?
- Alter Existing Crosswalk
 - 1. Traffic light with activation button
 - *Info from April 2014 call with City of Littleton Director of Public Works*
 - Used when parents present, kids ignore when parents not looking
 - Recommend neighbor agreement for new lights
 - Option 1: \$15-18k not in 2014 COL budget; near St. Mary's Church in Littleton on Prince St
 - 2. Solar Powered LED Crosswalk Sign with activation button
 - xwalk.com (US Toll Free: 1.888.446.9255)
 - Quote: \$4600 with signs, poles and solar panel. Shipping and installation extra.
 - Total: \$10k with labor?
 - Needs further review of warranty, etc...
 - 3. Stop Sign
 - City of Littleton
 - May need >75% of community approval



Potential Crosswalk: Danzig Place

- Location
 - South side of Danzig Pl to Trail on East side of Road
- Construction
 - Paint Lines (City of Littleton)
 - Crosswalk Signs (City of Littleton)
 - Visibility:
 - Road curve?
 - Trim lower part of trees in 2 medians (HOA)
- Cost
 - In City of Littleton working budget or need dedicated line item 2015?
- Schedule
 - HOA – trim tree?
 - City of Littleton availability?



Vehicle View – Heading South



Visibility Concern

Danzig: Ped and Vehicle Views

Pedestrian View – Heading East



Pedestrian View – Heading West



Vehicle View – Heading North



Visibility Concern

Vehicle View – Heading South



Visibility Concern

Recommended Plan

(updated from 5/8 meeting)

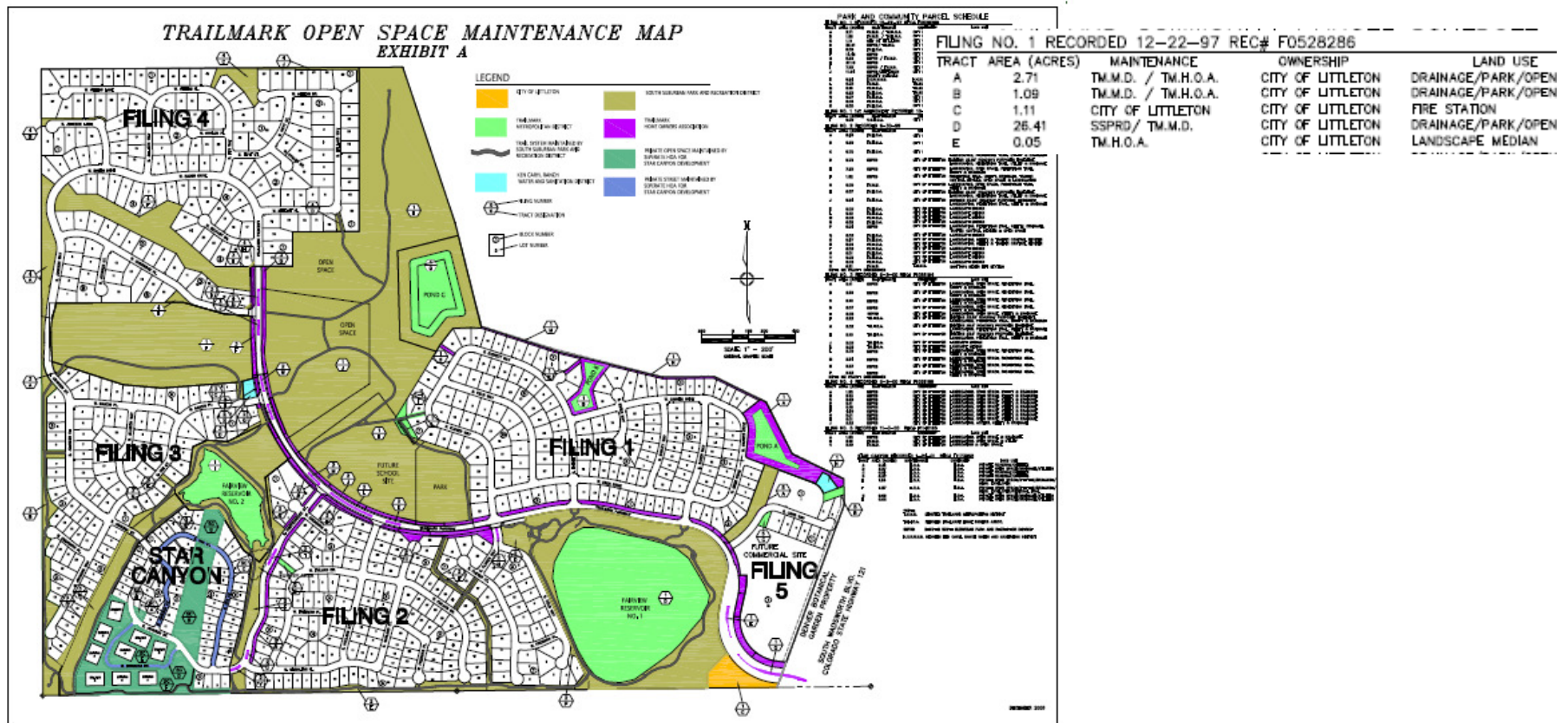
- 6/15/14 (<30d): Improve visibility at Holland Pkwy Crosswalk by removing lower branches of pine trees in center median
 - ~~<5/30: HOA Safety Committee marks how high to cut off branches with a florescent ribbon on each tree trunk~~
 - **5/8 Update: Common Area Committee will address visibility concerns in medians by trimming lower branches and examining bush heights.**
 - <6/15: HOA cuts lower branches off of pine trees to East and West approaches.
- 7/15/14: (<60d): Meet with City of Littleton on TrailMark Parkway Traffic issues
 - Meet with City of Littleton and HOA Safety Committee on process, timetable and cost (borne by city) to conduct a traffic study and process to add new crosswalk(s)
- TBD: Improve visibility at Crosswalk Near Entrance by removing lower branches of pine trees in center median
- 1/2015: Get community feedback on impact of changes.
 - Is it better or vehicles still not stopping?
 - If not, pursue enforcement with local police
- TBD: Investigate electric crosswalks; if warranted get into 2015 City Of Littleton budget

What Next?

- 5/20: Discuss issue, background and options at TMMD board with HOA Safety Committee (invite City of Littleton too)
 - Determine what we should do today vs. gathering more inputs.
 - Establish forward plan with responsible parties
- Follow-up with parties not present to start acting on plan
- Take Action!

Backup

- TrailMark – service plan / maintenance map



Valley Parkway, Littleton, CO

- Lower Branches Trimmed

